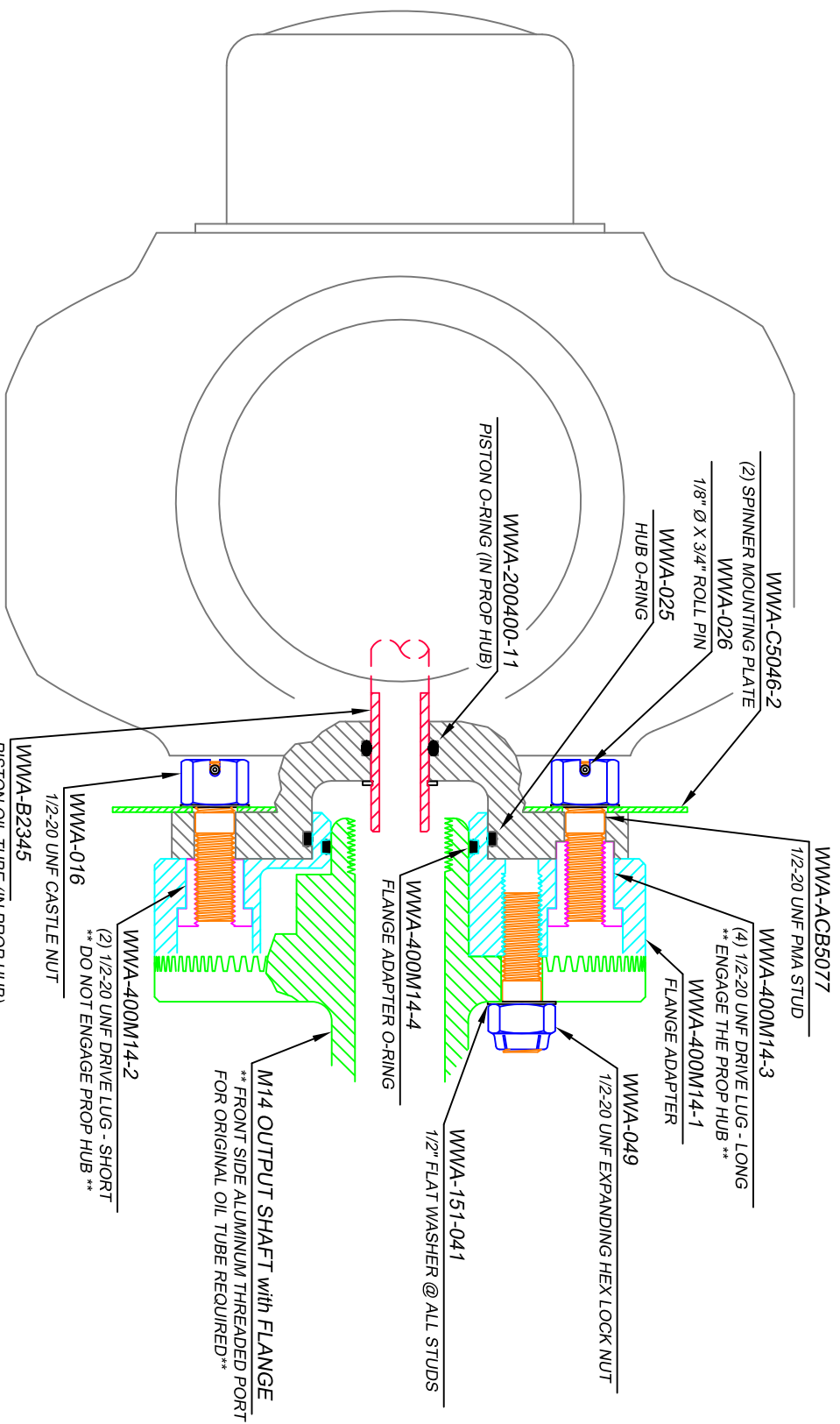


**** TORQUE ALL 1/2-20 STUDS AND NUTS TO 65 FT/LBS (88.1 N/m) ****



**** THE ORIGINAL M14 / V5307A-D35 PROP OIL DELIVERY TUBE
MUST BE REMOVED BEFORE HUB ADAPTER INSTALLATION ****

400C-M14 FLANGE ADAPTER INSTALLATION

- PROPELLER HUB
- 1/2-20 UNF STUD
- 1/2-20 UNF CASTLE NUT
- ROLL PIN & 1/2 FLAT WASHER
- SPINNER MOUNTING PLATES
- PROPELLER DRIVE LUG (LONG & SHORT)
- M14 PROP FLANGE ADAPTER
- M14 OUTPUT SHAFT with ALUMINUM PLUG

LEGEND