



Whirl Wind Propellers Corporation
1800 Joe Crosson Dr., El Cajon, CA 92020
619-562-3725

SERVICE LETTER

SL-400C-020624

TO: ALL OWNERS/OPERATORS OF AFFECTED PROPELLERS

SUBJECT: REPLACEMENT OF MCCAULEY COUNTERWEIGHTS ON ALL 400 SERIES PROPELLERS.

DATE: February 6, 2024

MODELS AFFECTED: All 400 Series counterweighted propellers manufactured by Whirl Wind Aviation with McCauley Counterweights operating on Lycoming IO-540 and O-540 engines. *Note: Whirl Wind Aviation Counterweights are not affected.

REASON: Crack has been found on McCauley Counterweight.

TIMELINE: Mandatory within the next 5 hours of operation.

CORRECTIVE ACTION: Remove spinner to check what counterweights are on propeller. *If McCauley counterweights are installed, inspect for cracks before next flight.* (See Figure 3 for Inspection Procedure). McCauley counterweights must be removed and scrapped within the next 5 hours of operation. **The McCauley counterweights can be easily identified from the Hexagonal bolt heads.** WWA counterweights have Allen bolts. See Figures 1 & 2 for reference.

Note: Most 400C Series propellers already have counterweights manufactured by Whirl Wind Aviation installed. In this case, just verify the bolt torques (Refer to Owner's Manual). No further action is required.

Contact Whirl Wind Propellers Corporation for replacement Counterweight kits.

REPLACEMENT PROCEDURE:

A propeller service center or an A&P mechanic can remove and install the new WWPC counterweights.

- 1) Remove McCauley Counterweights and SCRAP.
- 2) Install new Counterweights as per Instructions in Counterweight Kit.

**McCauley Counterweights
(to be replaced)**



Hexagonal Head Bolts used to identify McCauley Counterweights.

Figure 1

**Replace with Whirl Wind
Counterweight Design**



Allen Head Bolts used in Whirl Wind Counterweight Design.

Figure 2

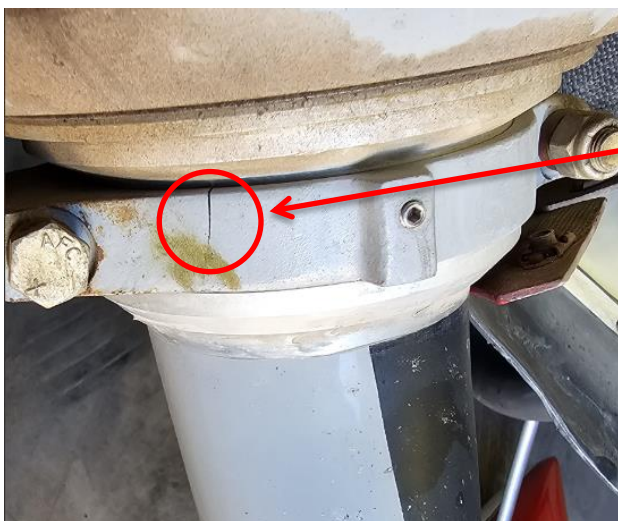


Figure 3

Clean and inspect Counterweight Clamps with 10X Magnifying glass for possible cracks.

If cracks are found, the propeller is not airworthy. (DO NOT FLY)

If no cracks are found, replace counterweights within the next 5 flight hours.